

# GERJA HIRO



The Hiro Series Mini Truck is engineered as a robust and economical solution for businesses requiring agility, efficiency, and a respectable payload capacity. Operating on a 4x2 drive system, it is designed to be the backbone of last-mile delivery and localized logistics. Available in CNG as well

**GERMAN  
PERFORMANCE  
JAPANESE PRECISION**

# DISCOVER WHAT MAKES GERJA HIRO EXCEPTIONAL

The GerJa Hiro Truck 2026 is powered by a high-performance Japanese ISUZU engine (2771cc), engineered for durability and reliable commercial operation.

Features and advantage

- Fashion city style, aerodynamic design, comfortable space, matching with better power and fuel saving

Key Features & Benefits

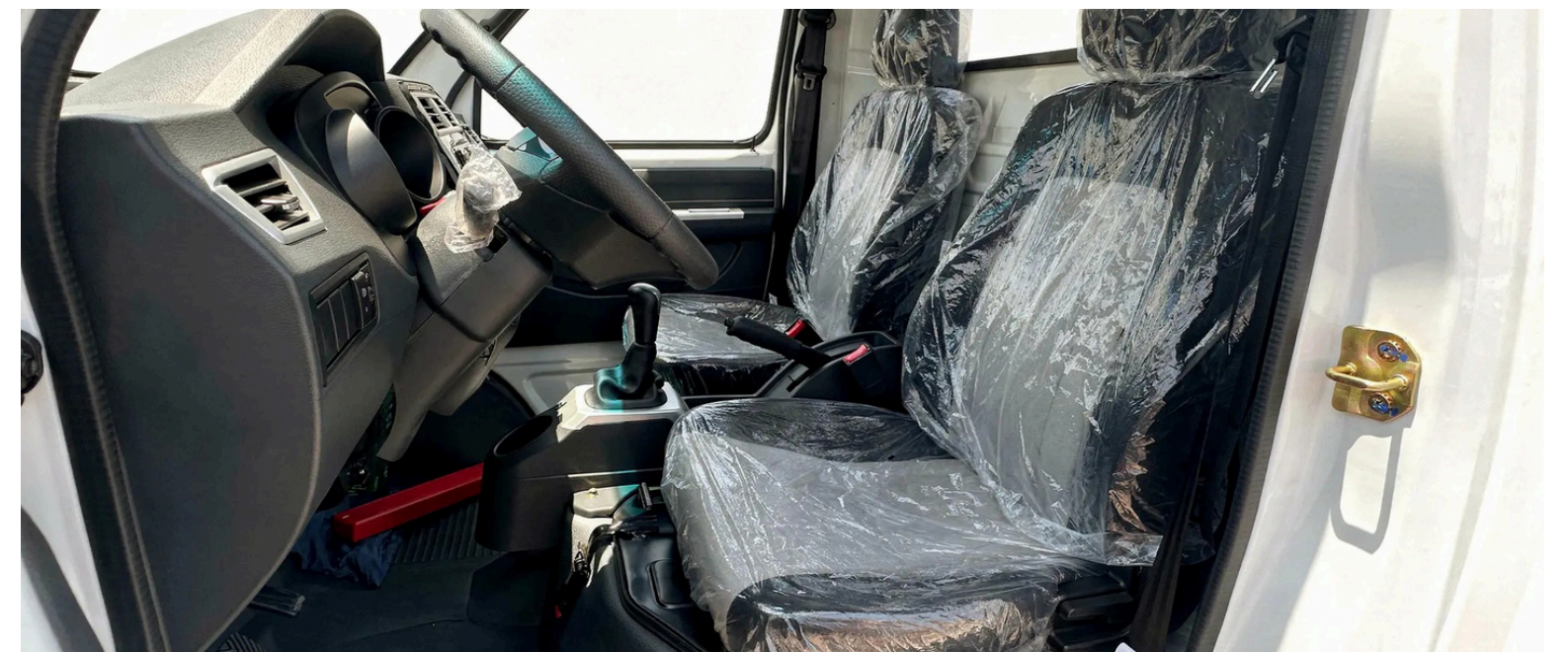
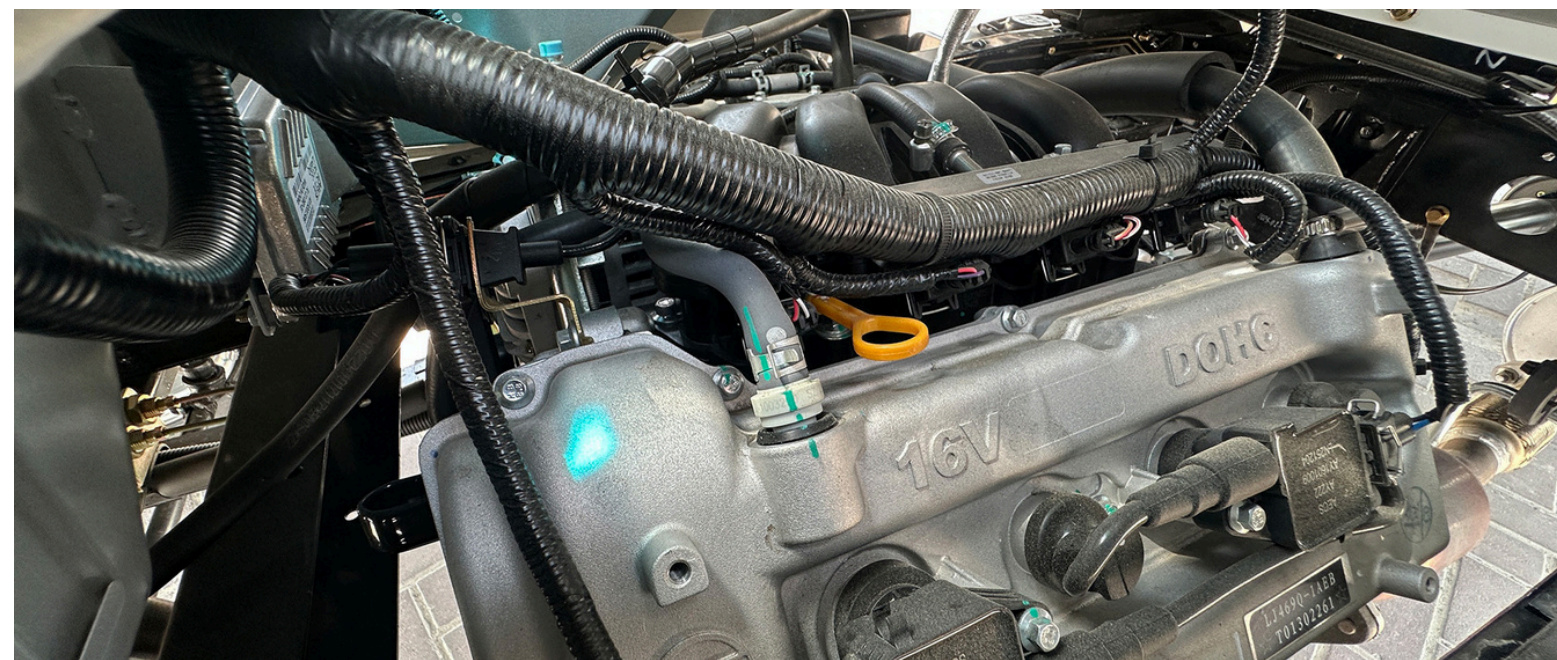
- Separate frame construction, 144mm reinforced manganese steel chassis, high toughness and strength, high loading capacity

Highlights & Benefits

- With 3 layers of anti-collision design, 185 size tire, 1440mm width wheel track, low center of gravity, steady turning, safer driving

Core Features & Advantages

- Reliable performance, DAM16KR engine, 123Hp surging power, strong acceleration and climbing



# EXTERIOR FEATURES GERJA HIRO 2026

- Strong & Functional Front Design
- Bold front grille with integrated headlights for enhanced visibility and a confident road presence.
- Durable Steel Cargo Bed
- Reinforced flatbed structure designed for heavy-duty loading and daily commercial use.
- Wide-Opening Side Panels
- Easy loading and unloading access for improved operational efficiency.
- Compact & Maneuverable Body
- Ideal dimensions for urban driving, narrow streets, and tight job sites.
- High Ground Clearance
- Ensures stability and reliability on uneven or industrial surfaces.



# COMFORT & INTERIOR – GERJA HIRO TRUCK



## Engine & Performance:

- Powered by strong WEICHAH and ISUZU engines for reliable and high-performance driving.
- 2026 Isuzu Engine, 2771cc, delivers ample power for heavy loads with efficient fuel consumption.

## Cargo Space & Versatility:

- Best-in-class cargo box size, offering flexible options for various customer needs.

## Interior & Features:

- Luxurious cockpit equipped with a 9-inch multifunctional touchscreen.
- Smooth touchscreen supports music, rearview camera, and more.

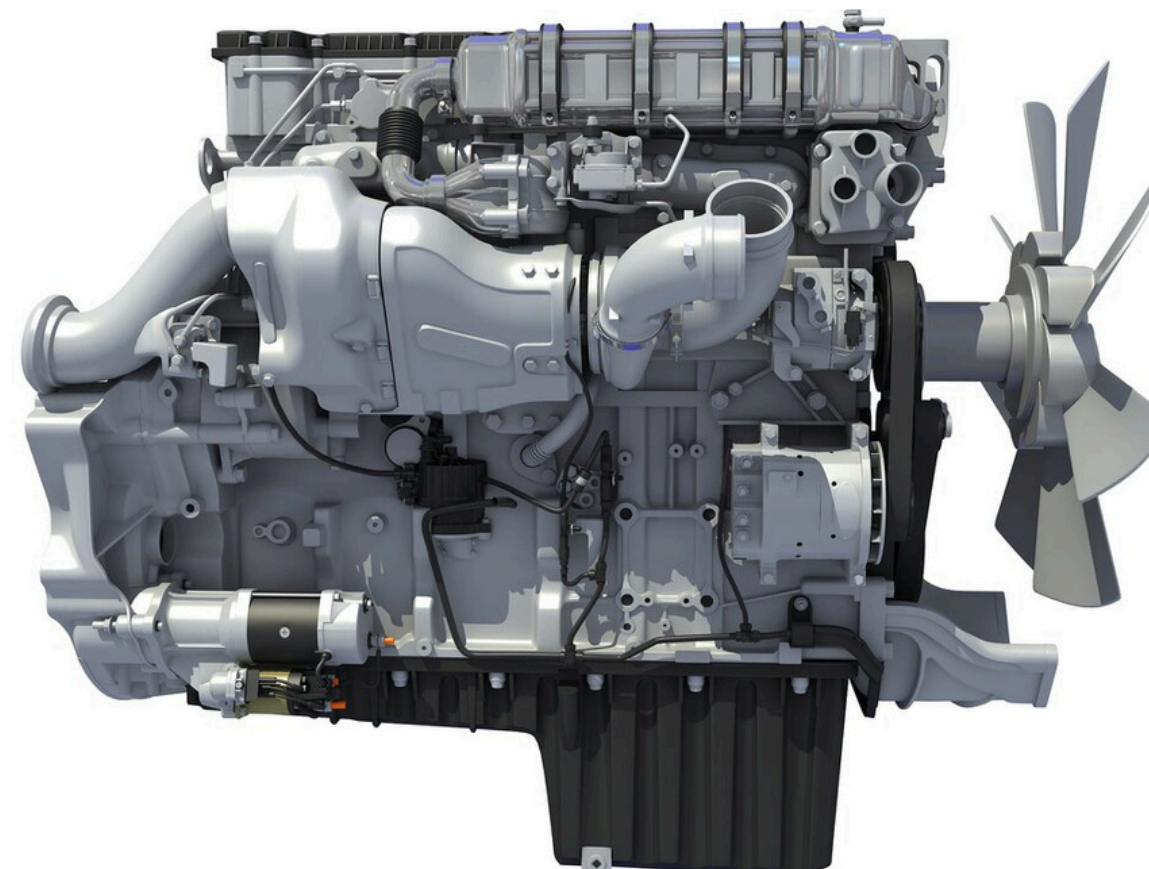
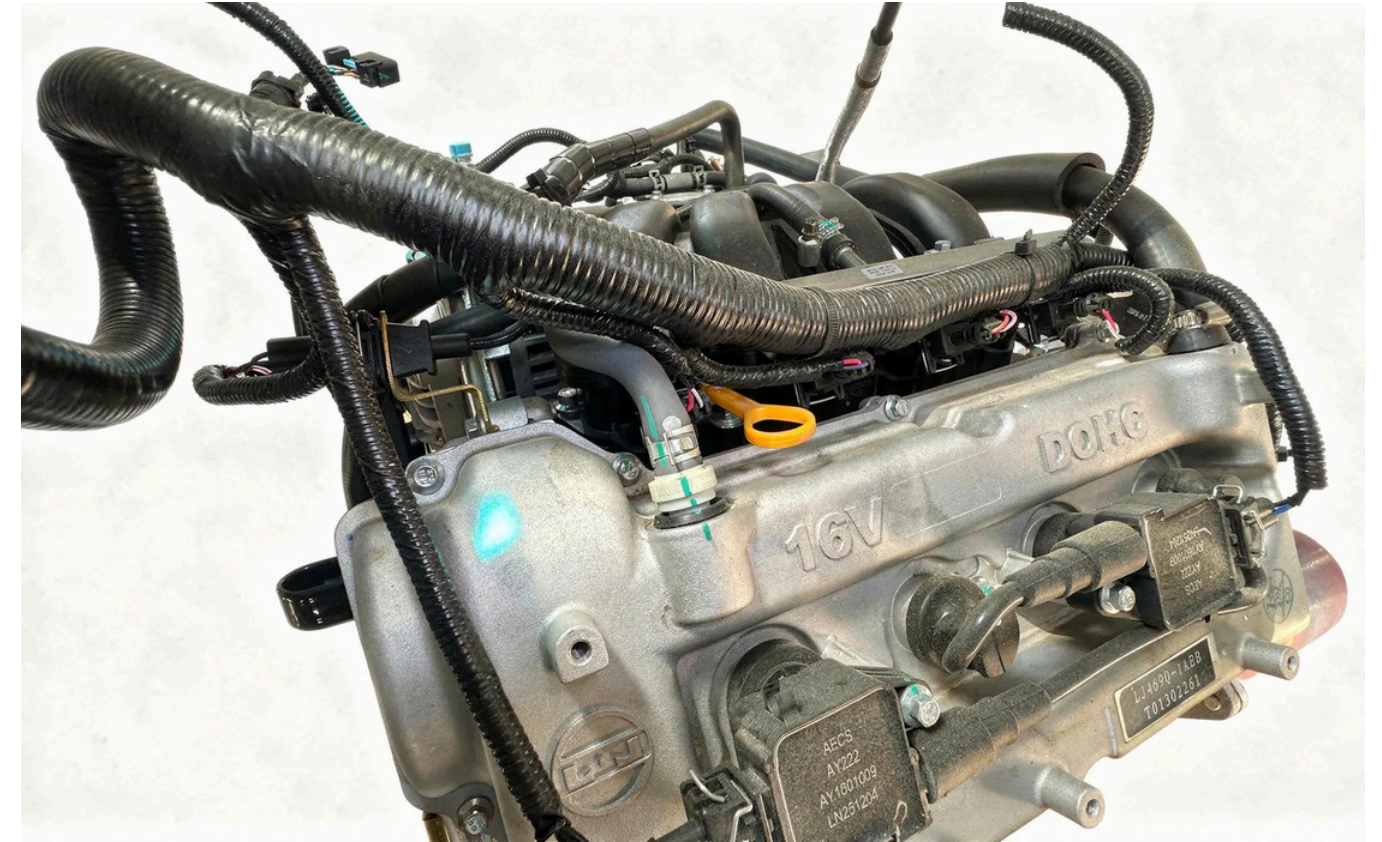
## Chassis & Stability:

- Specialised chassis alignment ensures strong load-bearing capacity and excellent stability on the road.

# ENGINE, V4 1597CC

The V4 1597cc engine delivers a balanced combination of power, efficiency, and reliability, making it ideal for daily commercial and urban operations.

- 1.6L (1597cc) V4 Configuration
- Compact yet capable engine designed for smooth and stable performance.
- Efficient Fuel Consumption
- Optimized for cost-effective operation and reduced running expenses.
- Responsive Power Delivery
- Provides consistent torque for city driving and light-duty transport tasks.
- Durable & Low Maintenance Design
- Built for long-term reliability in demanding working conditions.



# SAFETY AND DRIVING ASSISTANCE

- Blind Spot Monitoring (BSM) – Alerts the driver when vehicles are detected in the blind spots for safer lane changes.
- Lane Departure Warning – Warns the driver if the vehicle unintentionally drifts out of its lane.
- Automatic Emergency Braking (AEB) – Helps prevent or reduce the severity of collisions by automatically applying the brakes when a potential crash is detected.
- Smart Cruise Control – Maintains a safe distance from the vehicle ahead while driving, adjusting speed automatically.

- GerJa Porto 2026 • 2771cc Isuzu TRUCK



# GALLERY

Exterior & Interior Views



# SPECIFICATIONS



Fuel Type	GASOLINE
Emission	Euro-EIII
Suggested Payload	1 T
Cabin	Single Cabin (1600)
Wheel Base (mm)	2700
Overall Dimensions(mm)	4635*1655*1980
Curb Weight (kg)	1260
Load Weight (kg)	1000
G.V.W	2260
Max. Speed(km/h)	100
Tire Model	175R14LT
QTY of Wheels	4+1
Brake System	Hydraulic Brake
Parking Brake	Central Drum Type
Gearshift	5+1 Speed, Manually
Battery Volt	12V
Engine Model	LJ469Q-1AEB(Dongfeng)
Displacement(cc)	1249

# CONTACT US

📍 Jebel Ali Freezone  
Authority, Dubai, UAE

---

✉ [info@gerjamotors.com](mailto:info@gerjamotors.com)





THANK  
YOU